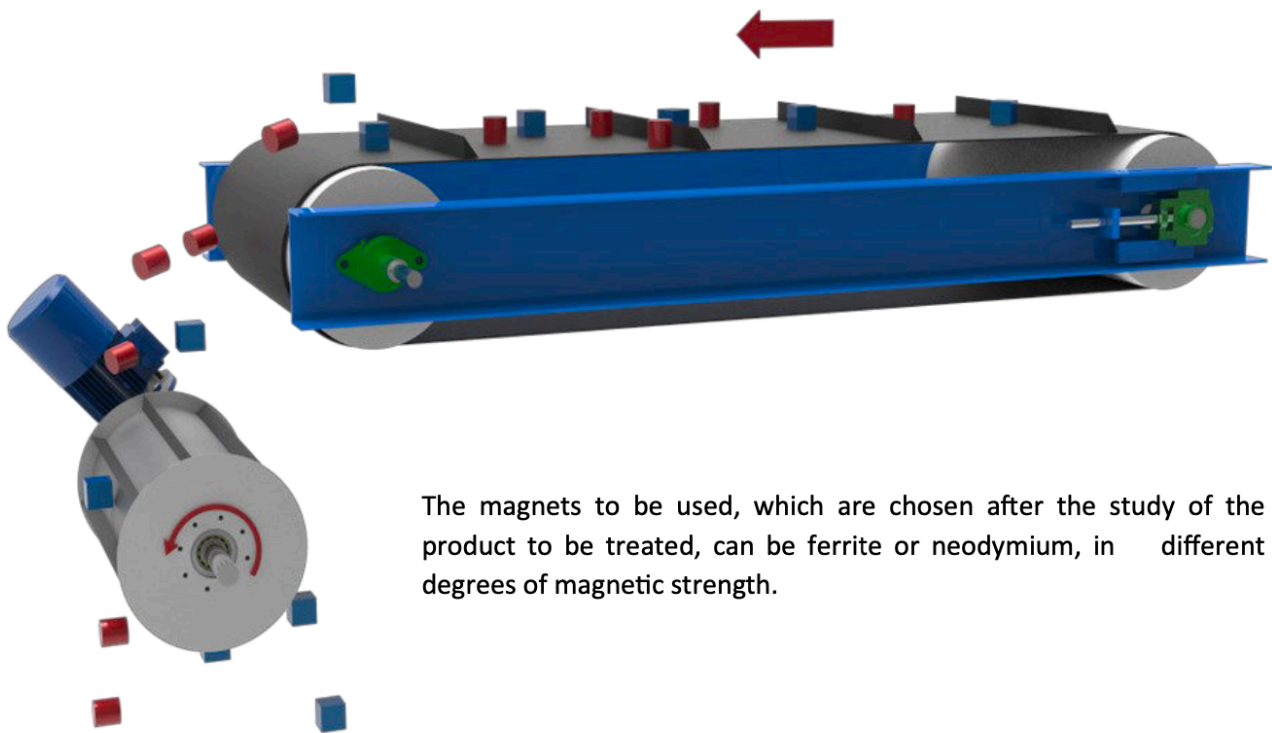
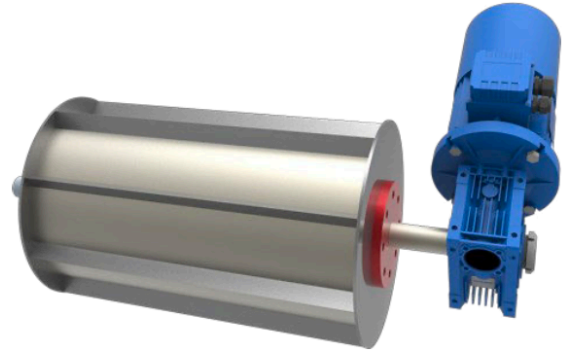


MAGNETIC DRUM

Magnetic drums are equipments for separation particularly suitable for continuous work in demanding conditions. They must be placed at the discharge end of the conveyors or vibrating feeders.

The magnets are placed in an internal circuitry, around a ferric support, protected by a stainless Steel external coating. This protection, which can be built with different thicknesses, equips these devices with a physical robustness that makes them ideal for the removal of large particle size products.



The magnets to be used, which are chosen after the study of the product to be treated, can be ferrite or neodymium, in different degrees of magnetic strength.

The inner part where the magnets are located occupy about 65% of the total circumference of the drum and remains static. The outer part rotates to drag the ferrous elements into the enabled collection container.



MAGNETIC DRUM FOR HEAVY DUTY APPLICATIONS

They are produced in a wide range of formats, both in diameters and lengths. We fully adapt its design to the characteristics of the existing installation or to the requirements of any new project.

The drive will be adapted to the weight of the unit and can be optionally equipped with a frequency converter.

The replacement of the gear-motor is quick and easy. We always use the best brands according to market standards.

