

# ELECTROMAGNETIC OVERBAND

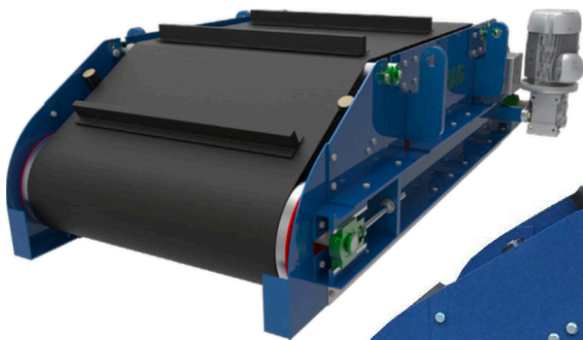
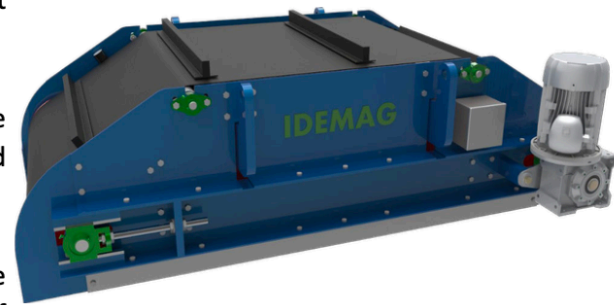
Overband separators with electromagnetic coil are especially suitable for continuous work that requires extra magnetic power. The electromagnetic field is higher than permanent magnets, which allows installing it at a greater distance from the material to be separated. The placement on the conveyor belt is exactly the same as for the system with permanent magnets.

They are especially effective in many industries (recycling, mining, cement, plastics, aggregates, etc.). Our compact design is highly efficient in terms of coil cooling, avoiding any magnetic power loss due to heat.

Each unit is designed according to each installation requirements. The magnetic system has a wide range of customized elements: electromagnetic coil power, physical measurements, conveyor belt type and type of drive fins, power and type of motor for traction, paint finishing, etc.

We have great experience in calculating the configuration of the electromagnetic coil to obtain the best magnetic values with reduced power consumption and maximum operating life.

The raw materials required for the construction of the control panel are accurately selected with top brands in order to ensure a high level of quality and reliability.



The working height shall be in a range from 100 to 500 mm, depending on the power (Kw) of the electromagnetic coil. IDEMAG

